

# ***PowerDriver PRO***<sup>TM</sup>

*from the creators of ColorPower<sup>TM</sup>*

## User Guide

For distribution with SubliJet<sup>®</sup> only  
**NOT FOR RESALE**

Rev 01

SubliJet is a registered trademark of Sawgrass Systems, Inc.

ColorPower, PowerDriver PRO and ColorSure are trademarks of Sawgrass Systems, Inc.

General Notice: Other product names used herein are for identification purposes only and may be trademarks of their respective owners. Sawgrass Systems, Inc. disclaims any and all rights in those marks.

## END-USER LICENSE AGREEMENT FOR SAWGRASS SOFTWARE – PowerDriver PRO.

**IMPORTANT-READ CAREFULLY:** This Sawgrass Systems Inc. End-User License Agreement ("EULA") is a legal agreement between you (either an individual or a single entity) and Sawgrass Systems Inc for the Sawgrass software product identified above, which includes computer software and may include associated media, printed materials, and "online" or electronic documentation ("SOFTWARE PRODUCT"). By installing, copying, or otherwise using the SOFTWARE PRODUCT, you agree to be bound by the terms of this EULA. If you do not agree to the terms of this EULA, do not install or use the SOFTWARE PRODUCT.

### Software PRODUCT LICENSE

Copyright laws and international copyright treaties, as well as other intellectual property laws and treaties protect the SOFTWARE PRODUCT. The SOFTWARE PRODUCT is licensed, not sold. The title to, and ownership of, this SOFTWARE PRODUCT remains with Sawgrass Systems Inc. (Sawgrass).

**GRANT OF LICENSE.** This EULA grants you the following rights:

- This license is provided to you for your use according to the terms hereof. You may install and use the SOFTWARE PRODUCT packaged herewith to practice the printing process described in U.S. Patent No. 5,488,907 (the "Sawgrass Process"). The use of any ink, dye or pigment to practice the Sawgrass Process, other than a SubliJet ink which is purchased from Sawgrass or its authorized distributor, is not a licensed use of the SOFTWARE PRODUCT. You agree not to use the SOFTWARE PRODUCT for any other purpose or in any process except as expressly permitted hereby.
- Not for Resale. You may not sell, or otherwise transfer for value, the SOFTWARE PRODUCT.
- No Reverse Engineering, Decompilation, Copying or Disassembly. You may not reverse engineer, decompile, copy or disassemble the SOFTWARE PRODUCT.
- No Rental. You may not rent, lease, or lend the SOFTWARE PRODUCT.
- Support Services. Sawgrass Systems, Inc. may provide you with support services related to the SOFTWARE PRODUCT ("Support Services"). Use of Support Services is governed by the Sawgrass policies and programs described in the user manual, in "online" documentation, and/or in other Sawgrass-provided materials. Any supplemental software code provided to you as part of the Support Services shall be considered part of the SOFTWARE PRODUCT and subject to the terms and conditions of this EULA. With respect to technical information you provide to Sawgrass as part of the Support Services, Sawgrass may use such information for its business purposes, including for product support and development. Sawgrass will not utilize such technical information in a form that personally identifies you.
- No Assignment or Sublicense. You may not assign or sublicense the rights granted hereby.
- Termination. Without prejudice to any other rights, Sawgrass may terminate this EULA if you fail to comply with the terms and conditions of this EULA. In the event of termination, you must destroy all copies of the SOFTWARE PRODUCT and all of its component parts.

**COPYRIGHT.** All title and copyrights in and to the SOFTWARE PRODUCT (including but not limited to any images, photographs, animations, video, audio, music, text, and "applets" incorporated into the SOFTWARE PRODUCT), the accompanying printed materials, and any copies of the SOFTWARE PRODUCT are owned by Sawgrass Systems Inc. or its suppliers. Copyright laws and international treaty provisions protect the SOFTWARE PRODUCT. Therefore, you must treat the SOFTWARE PRODUCT like any other copyrighted material, except that you may install the SOFTWARE PRODUCT on a computer for the uses permitted hereby. You may not copy the printed materials accompanying the SOFTWARE PRODUCT. You may not loan, rent, lease, or otherwise transfer the other medium to another user, except as part of the permanent transfer (as provided above) of the SOFTWARE PRODUCT.

**U.S. GOVERNMENT RESTRICTED RIGHTS.** The SOFTWARE PRODUCT and documentation are provided with RESTRICTED RIGHTS. Use, duplication, or disclosure by the Government is subject to restrictions as set forth in subparagraph (c)(1)(ii) of the Rights in Technical Data and Computer Software clause at DFARS 252.227-7013 or subparagraphs (c)(1) and (2) of the Commercial Computer Software-Restricted Rights at 48 CFR 52.227-19, as applicable.

#### MISCELLANEOUS

- a. If you acquired this product in the United States, this EULA is governed by the laws of the State of South Carolina. In the event of any dispute arising under this license or from the use of the SOFTWARE PRODUCT, each party irrevocably agrees to the jurisdiction of the United States District Court for the District of South Carolina, Charleston Division.
- b. If you acquired this product in Canada, this EULA is governed by the laws of the Province of Ontario, Canada. In the event of any dispute arising under this license or from the use of the SOFTWARE PRODUCT, each party irrevocably agrees to the jurisdiction of the courts of the Province of Ontario and further agrees to commence any litigation which may arise hereunder in the courts located in the Judicial District of York, Province of Ontario.
- c. If this product was acquired outside the United States, then local law may apply.

**LIMITED WARRANTY.** Sawgrass warrants that (a) the SOFTWARE PRODUCT will perform substantially in accordance with the accompanying written materials for a period of thirty (30) days from the date of receipt, and (b) any Support Services provided by Sawgrass shall be substantially as described in applicable written materials provided to you by Sawgrass, and Sawgrass support engineers will make commercially reasonable efforts to solve any problem issues. Some states and jurisdictions do not allow limitations on duration of an implied warranty, so the above limitation may not apply to you. To the extent allowed by applicable law, implied warranties on the SOFTWARE PRODUCT, if any, are limited to thirty (30) days.

**CUSTOMER REMEDIES.** Sawgrass' and its suppliers' entire liability and your exclusive remedy shall be, at Sawgrass' option, either (a) return of the price paid, if any, or (b) repair or replacement of the SOFTWARE PRODUCT that does not meet Sawgrass' Limited Warranty and which is returned to Sawgrass with a copy of your receipt. This Limited Warranty is void if failure of the SOFTWARE PRODUCT has resulted from accident, abuse, or misapplication. Any replacement SOFTWARE PRODUCT will be warranted for the remainder of the original warranty period or thirty (30) days, whichever is longer. Outside the United States, neither these remedies nor any product support services offered by Sawgrass are available without proof of purchase from an authorized international source.

**NO OTHER WARRANTIES.** To the maximum extent permitted by applicable law, Sawgrass and its suppliers disclaim all other warranties and conditions, either express or implied, including, but not limited to, implied warranties of merchantability, fitness for a particular purpose, title, and non-infringement, with regard to the SOFTWARE PRODUCT, and the provision of or failure to provide Support Services. This limited warranty gives you specific legal rights. You may have others, which vary from state/jurisdiction to state/jurisdiction.

**LIMITATION OF LIABILITY.** To the maximum extent permitted by applicable law, in no event shall Sawgrass or its suppliers be liable for any special, incidental, indirect, or consequential damages whatsoever (including, without limitation, damages for loss of business profits, business interruption, loss of business information, or any other pecuniary loss) arising out of the use of or inability to use the SOFTWARE PRODUCT or the provision of or failure to provide Support Services, even if Sawgrass has been advised of the possibility of such damages. In any case, Sawgrass' entire liability under any provision of this EULA shall be limited to U.S.\$5.00. Because some states and jurisdictions do not allow the exclusion or limitation of liability, the above limitation may not apply to you.

# Table of Contents

<b>INTRODUCTION</b>	<b>2</b>
<b>SETUP INSTRUCTIONS</b>	<b>2</b>
Software Installation	2
<b>USING POWERDRIVER PRO</b>	<b>4</b>
Helpful Hints	4
Choosing Substrate	7
Choosing Color Management Settings	7
Bitmap Color Management	8
Vector Color Management	9
Choosing Resolution (PowerDriver PRO 900 only)	10
Mirroring Your Image	10
Printing Your Image	10
Using ColorSure - Palette Method	13
ColorSure Example:	15
<b>TECHNICAL SUPPORT</b>	<b>16</b>

## ***Introduction***

Obtaining the benefits of ColorPower color management is now incredibly easy - simply print from your application with PowerDriver PRO rather than the Epson printer driver. PowerDriver PRO prints your image just like the Epson printer driver except for the colors. Watch how it magically makes SubliJet colors picture perfect!

PowerDriver PRO delivers both convenience and the highest quality SubliJet color management technology. The innovation demonstrated by PowerDriver PRO is the result of our dedication to you, our customers. At Sawgrass Systems, we are focused on delivering the highest quality digital transfer technology available. We fully expect that you will be “wowed” by the results you obtain with SubliJet and PowerDriver PRO.

PowerDriver PRO runs only under Windows 95/98. If you are not running Windows 95/98, you will not be able to use PowerDriver PRO, but we have another color management solution for you. If your computer runs Windows 2000/NT, please contact your SubliJet distributor to obtain your free copy of *ColorPower for SubliJet* software. If you are a Mac user, ask your SubliJet distributor about other color management options.

## ***Setup Instructions***

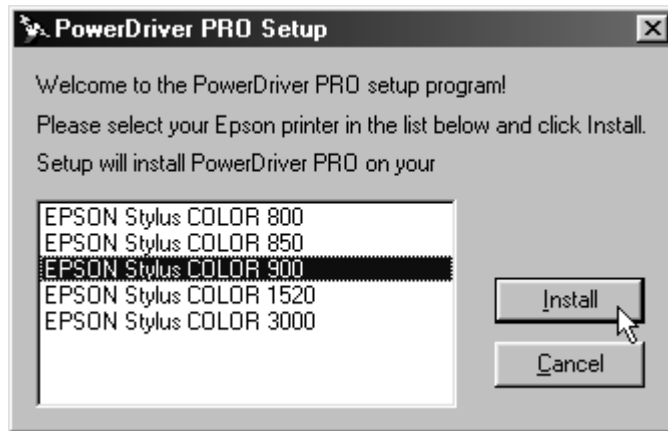
While PowerDriver PRO appears to work like any other printer driver software, it relies on the Epson printer driver software to perform the actual printing. For this reason, the PowerDriver PRO installation will notify you if it cannot locate a compatible version of the Epson printer driver on your system. Compatible versions of the Epson printer drivers can be downloaded from our website at [www.sublimation.com](http://www.sublimation.com).

### **Software Installation**

#### **➤ To Install PowerDriver PRO**

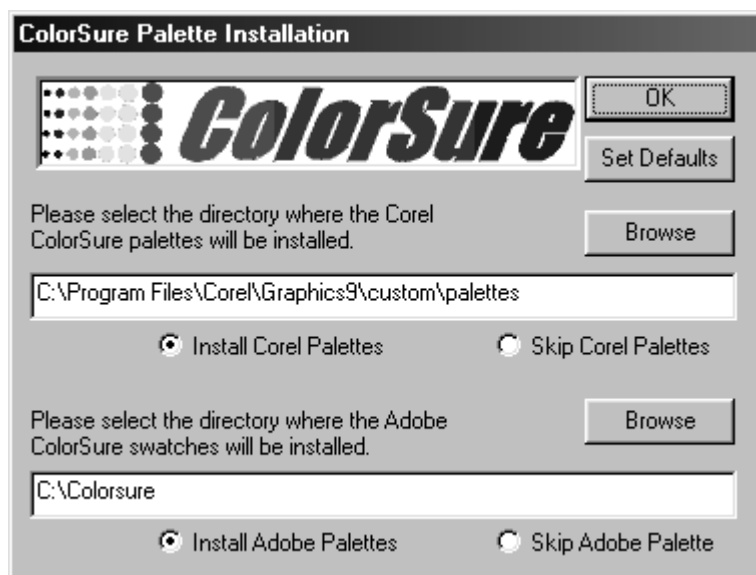
1. If you have not already done so, install your Epson printer driver software.
2. Insert the PowerDriver PRO diskette into your floppy disk drive.
3. Run the PowerDriver PRO setup program on the floppy by choosing *Run...* from the *Start* menu and entering A:\SETUP.

4. Choose your printer and press the *Install* button.



5. To make using the Sawgrass' ColorSure color management quick and easy, PowerDriver PRO gives you the option of copying a Corel palette and an Adobe Colorswatch file to your system.

- If you have Corel software installed on your system, select *Install Corel Palettes* - the ColorSure palette for Corel products will be copied to the specified directory. If you want to change the directory, press the Browse button to select an alternate path. If you do not want to install the Corel Palette, select the Skip Corel Palettes button.
- If you have Adobe software installed on your system, select *Install Adobe Palettes* - the ColorSure palette for Adobe products will be copied to the specified directory. If you want to change the directory, press the Browse button to select an alternate path. If you do not want to install the Adobe Palette, select the Skip Adobe Palette button.



## Using PowerDriver PRO

PowerDriver PRO is simple to use. Whenever you have SubliJet inks in your printer, you should print using PowerDriver PRO. **Do not** print to your Epson printer with the Epson printer driver; printing with the Epson driver will not give you the benefit of color management.

Before you print, you will need to choose a printer. Choose the printer named 'PowerDriver PRO #' where '#' corresponds to the printer model you own. For example, if you own an Epson Stylus Color 800 printer, choose the printer named 'PowerDriver PRO 800.'

The only time you will need to use your Epson Stylus Color printer driver is when you need to use Epson's printer utilities. These utilities are used to perform nozzle check, head cleaning, and print head alignment functions. You can learn more about using these printer utilities by consulting your Epson printer documentation.

### Helpful Hints

- CorelDraw utilizes a particular data type for Power Clips and Texture Filled objects. This data type is incompatible with PowerDriver PRO and will not print properly. In addition, any bitmap that has been cropped with the *node-editing tool* will exhibit the same problems. To eliminate the incompatibility, simply convert the object in question to a bitmap prior to printing.
- PowerDriver PRO requires the Epson printer driver to properly process data to the printer. **Do not change the name of the Epson driver!** If you do, you will receive an error message: "Error while spooling ..."
- When printing scanned images or photographs, be sure to select ***Photographic (default)*** under Bitmap Color Management. Selecting ***Colorsure*** may result in unpredictable results.
- When printing vector gradient fills (i.e. a fade from one color to another), be sure to select ***Standard*** under Vector Color Management. Selecting ***Colorsure*** may result in undesirable color "bands" in the gradient.

To configure PowerDriver PRO, you must display its printer properties. There are two ways to display the printer properties.

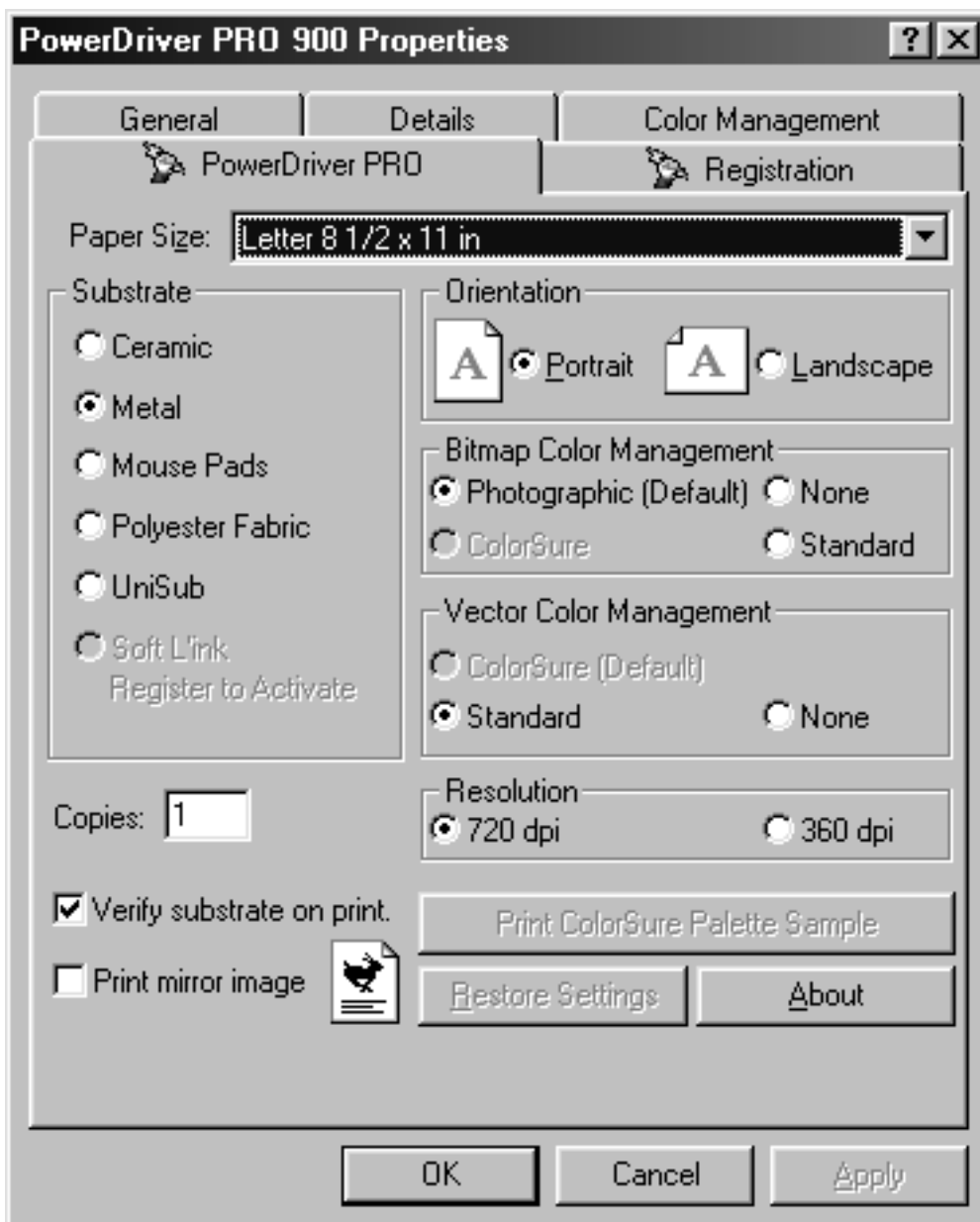
➤ **To display your PowerDriver PRO printer properties**

1. Click on Start> Settings> Printers.
2. Right-click on your PowerDriver PRO printer.
3. Select *Properties* from the pop-up menu.

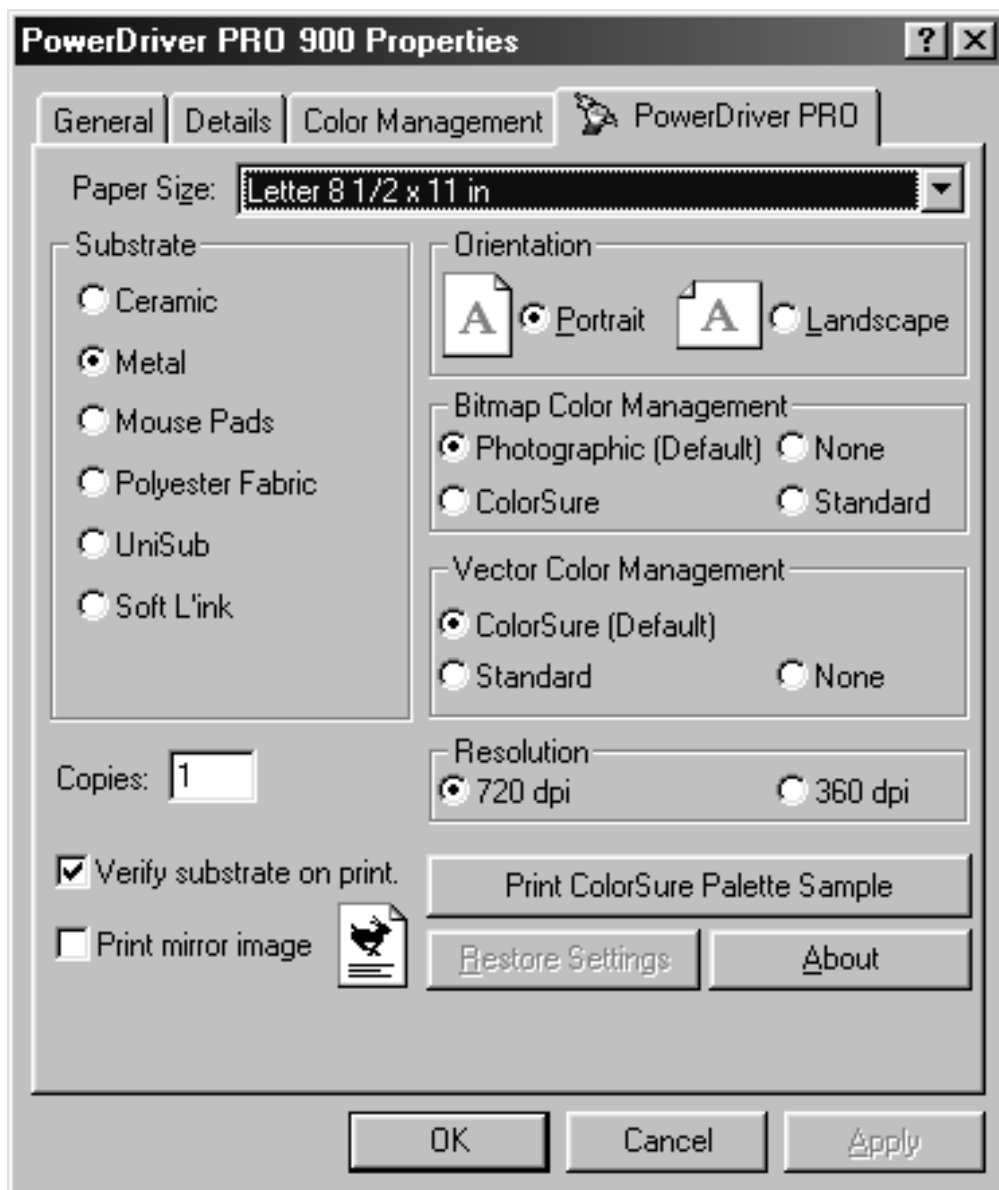
- or -

1. Display your Print Setup or Print dialog. Most applications provide a File menu with a similar Print menu option.
2. Click on the properties button in the displayed print dialog.

This figure shows the PowerDriver PRO printer properties for the unregistered version. Please note that until you register, you will not be able to use the ColorSure color correction method, you will not be able to print the ColorSure palette, and you will not have access to the Soft L'ink color correction.



This figure shows the PowerDriver PRO printer properties for the registered version. The ColorSure color correction method, Print ColorSure Palette Sample, and Soft L'ink color correction are only available to registered users.



From the PowerDriver PRO tab, you can verify and change all of your basic printer driver settings. Most of these settings are self-explanatory; however, the color management settings require some clarification.

## Choosing Substrate

Look at the properties in the previous figure. You will see a section titled Substrate. This word describes the material you are transferring to. Always select the name of the substrate you will be transferring your print onto. PowerDriver PRO adjusts the colors specifically for each different substrate.

If the check-box labeled “Verify my substrate selection when I print” is checked, you will be asked to confirm your choice of substrate whenever you print to PowerDriver PRO. This feature assists you by making sure you have not forgotten to change your selection when printing to a different substrate.

**CAUTION:** If you uncheck the substrate verification box, PowerDriver PRO will use the substrate selection setting without confirmation. It is recommended that you leave this box checked unless you always transfer to the same substrate.

## Choosing Color Management Settings

Look again at the properties dialog in the figure. The Color Management settings are found in two sections on the PowerDriver PRO tab: the Bitmap Color Management section, and the Vector Color Management section.

The Color Management settings determine how PowerDriver PRO adjusts colors for printing both bitmap and vector graphics.

Since it is not possible to accurately reproduce all colors, some colors need to be ‘adjusted’ to the nearest reproducible color. This adjusting of colors can sometimes cause undesirable effects in the printed image. Depending on the type of artwork you are printing, you may wish to adjust colors based on the following criteria.

## Bitmap Color Management

### ***None***

Use this option if you are printing a file that contains bitmap images that have been custom designed to print well without color adjustments.

### ***Photographic (Default)***

Choose this option when printing photographic images. This option makes smooth continuous tone reproduction the number one priority and may sacrifice some color accuracy.

### ***Standard***

This option makes accurate color reproduction the highest priority. Choose this option when you have a bitmap file or imported bitmap that has been manually drawn in a design tool or contains only 'spot' colors rather than continuous tone photographs. You would choose this option, for instance, if your bitmap contained cartoon characters, charts and graphs or logos.

### ***ColorSure***

This option can be best described as "Painting by Number" color management. You design your artwork by choosing colors from the ColorSure palette. These colors, known as ColorSure colors are passed through a special lookup table so that the transferred color will match the transferred palette color. ColorSure should only be chosen when you have created your image with the ColorSure colors. Printing photographs or scanned images using ColorSure is NOT recommended. It is IMPORTANT to remember that the palette color on the screen cannot be used to determine the transfer color.

**NOTE: Sawgrass strongly recommends that you print and transfer the ColorSure palette to verify final output color. See page 13 for instructions.**

## Vector Color Management

### ***ColorSure (Default)***

This option can be best described as “Painting by Number” color management. You design your artwork by choosing colors from the ColorSure palette. These colors, known as ColorSure colors are passed through a special lookup table so that the final color will match the transferred palette color. ColorSure should only be chosen when you have created your image with the ColorSure colors. It is **IMPORTANT** to remember that the color on the screen cannot be used to determine the transfer color.

**NOTE: Sawgrass strongly recommends that you print and transfer the ColorSure palette to verify final output color. See page 13 for instructions.**

### ***None***

If you are printing a file and you do not want PowerDriver PRO to make any adjustments to your illustration (vector) art, choose this option. You might do this if you have designed artwork with a custom palette whose colors are designed to print well without color adjustments.

### ***Standard***

This option makes accurate color reproduction the highest priority.

## Choosing Resolution (PowerDriver PRO 900 only)

Look again at the properties dialog in the figure. Notice that you have the option of selecting 720 or 360 dpi.

### **720 DPI**

This setting is recommended for photographic output on all hard substrates such as metal and ceramic. The higher resolution will result in longer printing times.

### **360 DPI**

This setting is recommended for softer substrates such as mouse pads, polyester, and Soft L'ink shirts. In addition, vector images can be printed at 360 dpi for all substrates. This option will print your images much faster than the 720 dpi selection.

## Mirroring Your Image

When you heat transfer your image, the result is a mirror image of the original. Therefore, you will normally want to print your sublimation transfers mirrored. Then, when transferred, your image will look just the way it is supposed to.

If the check-box labeled “Print as a mirror image” is checked, your artwork is mirrored during printing. If you choose to mirror your artwork in your graphics software, you will need to uncheck the mirror image setting in the driver.

Once you have made all the necessary changes, press the “OK” button to return to the print dialogue box.

## Printing Your Image

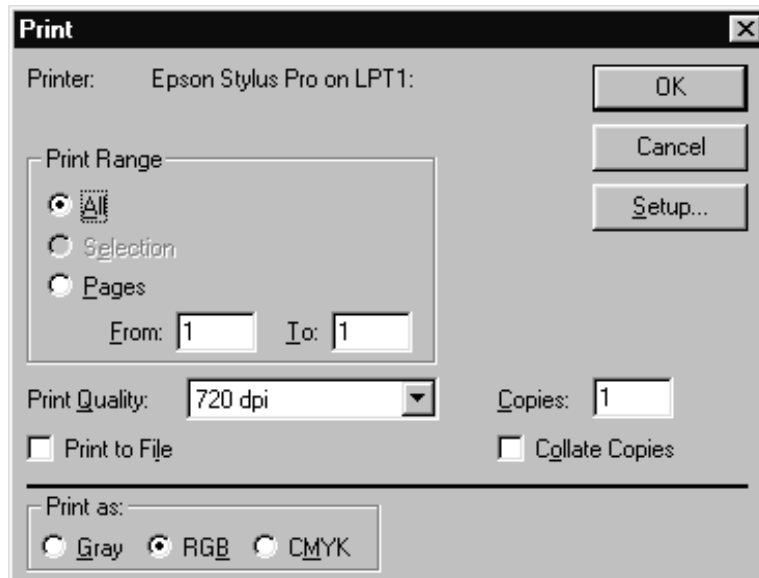
Now comes the easy part. Simply print to PowerDriver PRO as you would print to any printer. This usually means just pressing the Print button in your graphics application.

**CAUTION:** Some graphics applications try to adjust colors for you. You **MUST** defeat such color management. The following section provides specific instructions on how to do so.

## Defeating Your Application's Color Management

PowerDriver PRO provides a complete color management solution for your SubliJet printing. It is extremely important that you turn off, or disable, any color matching features associated with printing in your design software. An explanation of how to disable print-time color management in several popular design packages follows:

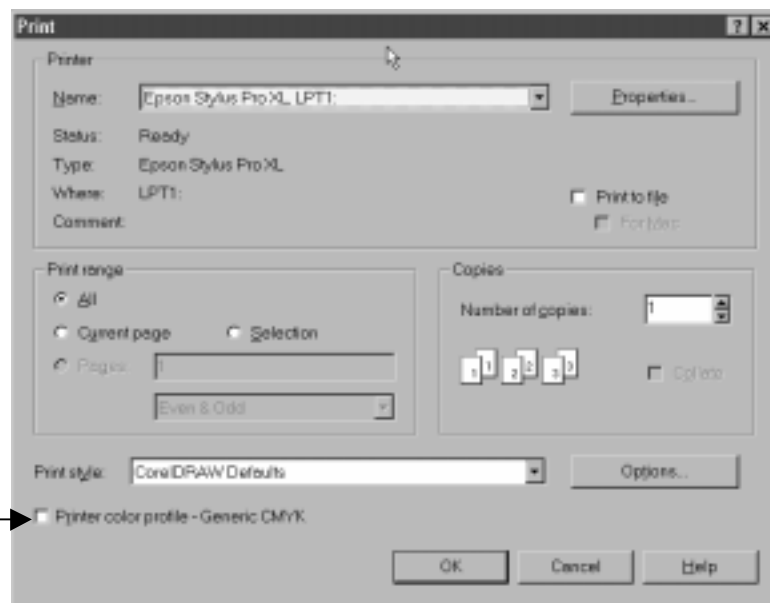
If you are using **Adobe Photoshop**, ensure that RGB is selected in the *Print as* portion of the print dialog. See figure below.



Select the RGB option.

↗ Photoshop Print dialog

If you are using **version 5, 6, or 7** of **CorelDRAW**, ensure that you have the *Printer Color Profile* check box unchecked. This setting is found in the lower left of the Print dialog window. See figure below.

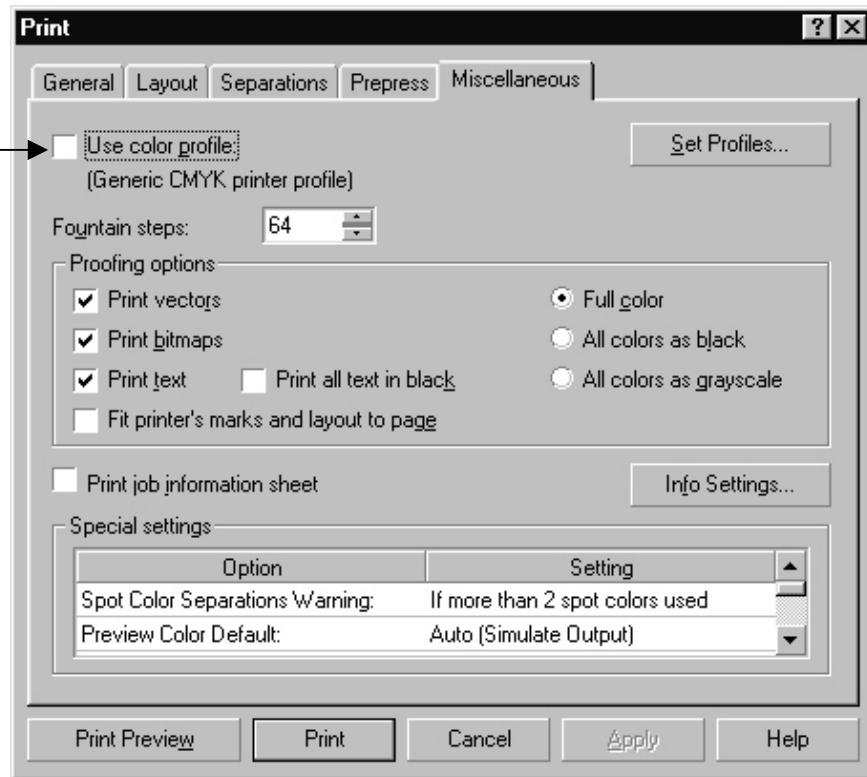


Make sure this box is not checked.

CorelDRAW 5, 6, and 7 print dialog

If you are using **CorelDRAW 8 or 9**, make certain that the *Use Color Profile* checkbox on the *Miscellaneous* tab is not checked. The figure below is the CorelDRAW 8 print dialog; CorelDRAW 9 is similar.

Make sure this box is not checked.



CorelDRAW 8 print dialog

## Using ColorSure - Palette Method

Getting perfect spot colors is now as easy as 1-2-3!

1. Print and transfer a ColorSure palette onto your target substrate.
2. Design your artwork by picking colors from the ColorSure palette.
3. Print your artwork using PowerDriver PRO's ColorSure color management.

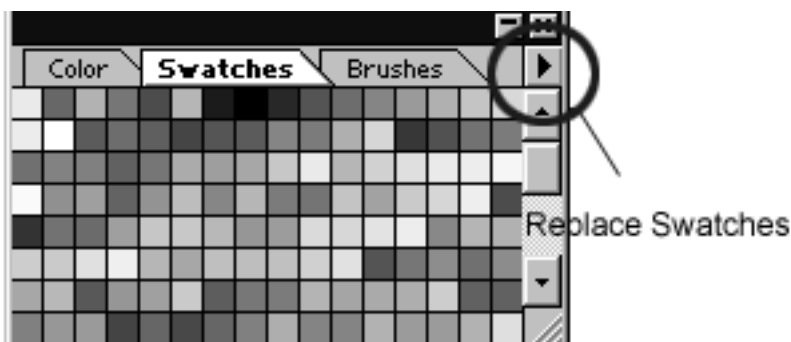
### • Print a ColorSure Palette

Opening the PowerDriver PRO printer property page, choosing your target Substrate, and pressing the Print ColorSure Palette button print the ColorSure Palette. Transfer the printout to the substrate and you have a visual aid to choose the colors that match your design requirements.

### • Design your Artwork

By picking colors from the ColorSure palette, you will be able to consistently reproduce colors in a reliable manner. To assist you in designing your artwork, PowerDriver PRO installed two palettes, one for Adobe products and one for Corel products. These colors match the palette that is printed from PowerDriver PRO.

- To open the ColorSure Palette in Corel 9, choose Window | Color Palette | Open Palette. Select the file ColorSure Palette Corel v1.cpl.
- To open the ColorSure Palette in Corel 8, choose View | Color Palette | Load Palette. Select the file ColorSure Palette Corel v1.cpl.
- To open the ColorSure Palette in Corel 7, choose Views | Color Palette | Load Custom Colors. Select the file ColorSure Palette Corel v1.cpl.
- To open the ColorSure Palette in Adobe PhotoShop, Choose the Swatches Palette, Click the option arrow on the palette, Choose *Replace Swatches* and pick the ColorSure Palette Adobe v1.aco file.



## ***HINT***

After you have the ColorSure palette loaded into CorelDraw, move the cursor over each color. As the cursor passes over each different color, the ColorSure name is displayed in the status area at the bottom of the screen.

- **Print your Artwork**

Once you've completed the design of your artwork, you are ready to print. Verify that PowerDriver PRO is set to the proper substrate. Verify that Vector Color Management is set to ColorSure. Select the proper number of copies and print!

## ColorSure Example:

You need to create 10 coffee mugs with your customer's company logo, each with a different and employee names.

### 1) Create a ColorSure Palette

Open PowerDriver PRO, select *ColorSure* Vector Color Management. Select *Ceramic* as your Substrate and press the *Print ColorSure Palette Sample* button. Transfer the ColorSure Palette onto ceramic.

### 2) Create the Artwork

The logo is a green tree in the foreground and a red and yellow sunset in the background. The employee's names will be created in black. The customer has given you a scan ready, full color proof of his company's logo. The logo is scanned and converted into a CorelDraw file using CorelTrace. Open CorelDraw and load the image. Add the first employee name. Open the ColorSure palette in Corel. Compare the logo on the proof to your ColorSure Palette on ceramic. You determine that the color of the tree is SubliJet 67, the yellow portion of the sunset is SubliJet 31, the red portion is SubliJet 154, and the employee names will be printed with 100% Black. Use the Corel Pick tool to select the tree, and then click SubliJet 67 in the ColorSure palette. Use the Corel Pick tool to select the red portion of the sunset, and then click SubliJet 154 in the ColorSure palette. Use the Corel Pick tool to select the yellow portion of the tree, and then click SubliJet 31 in the ColorSure palette. Use the Corel Pick tool to select the employee name, then click 100% Black in the ColorSure palette.

### 3) Print and Transfer

Save your artwork. Click File, Print. Choose the PowerDriver PRO printer driver. Click Properties. Make sure that the Substrate is set to Ceramic, the Vector Color Management is set to ColorSure, and the Print as mirror image is checked. Click OK. Click the print button.

Please consult your SubliJet Getting Started Guide for information on transfer time, temperature and pressure settings for individual substrates.

# **Technical Support**

If you are having difficulties achieving good results from PowerDriver PRO, you have several support options:

## **Standard Support:**

1. **Telephone:** You may contact your authorized SubliJet reseller during their normal hours of operation for assistance.
2. **Internet:** Visit the *Technical Support* area of the Sawgrass Systems, Inc. website at [www.sublimation.com](http://www.sublimation.com). The troubleshooting utility found here will provide you with solutions to some of the most common problems. You can submit a detailed description of your problem if you need further assistance. We will work with your reseller to provide you with a solution to your printing problems.
3. **Fax:** You may fax a detailed description of your problem to Sawgrass Technical Support at (843) 849-3847. We will work with your reseller to provide you with a solution to your printing problems.

## **Priority Support:**

If you choose to speak directly with a Sawgrass Representative you may do so by calling (843) 884-1575 between the hours of 8:30AM and 6:00 PM Eastern Time. **This option is free during the first 30 days of product ownership.** After 30 days priority assistance will be provided at a cost of \$9.99 per inquiry.







The Sawgrass Company  
A Division of Sawgrass Systems, Inc.  
2233 Highway 17 North  
Mount Pleasant, South Carolina 29466  
fax 843.849.3847  
[www.sublimation.com](http://www.sublimation.com)